

# MT100 Mini-Track Loader



The MT100 Mini Track Loader is built with you in mind. Overflowing with world-leading design and pure Bobcat DNA. If you're looking to save time, maximize your output in tight spaces, or do it all alone, this is the perfect match for you and your business.

[Request a Quote](#)

[Schedule a Demo](#)

[Find a Dealer](#)

## MT100 Specifications

Key Specifications
<b>MT100 Mini-Track Loader</b>
<b>Tipping load</b>
1290 kg
<b>Engine power</b>
17.5 kW
<b>Operating weight</b>
1538 kg
<b>Lift height</b>
2.1 m
<b>ROC</b>
451 kg
Machine Rating
<b>MT100 Mini-Track Loader</b>
<b>Rated operating capacity (ISO 14397-1)</b>
460.00 kg
<b>Tipping load (ISO 14397-2):</b>
1314.00 kg
<b>Pump capacity</b>
45.40 L/min
<b>System relief at quick couplers</b>
200.00 bar
<b>Travel speed, reverse</b>
4.70 km/h
<b>Travel speed, forward</b>

6.60 km/h

## Engine

### MT100 Mini-Track Loader

#### Make / Model

KUBOTA / D902-E4B-BC-1

#### Fuel

Diesel

#### Cooling

Liquid

#### Power at 3600 RPM (ISO 9249)

17.50 kW

#### Torque at 2600 RPM (SAE J9249)

54.20 Nm

#### Number of cylinders

3

#### Displacement

899.00 cm<sup>3</sup>

#### Fuel tank

26.50 L

## Weights

### MT100 Mini-Track Loader

#### Operating weight

1538.00 kg

#### Shipping weight

1381.00 kg

## Dimensions

### MT100 Mini-Track Loader

#### Angle of departure

23.80 °

#### Carry position

168.00 mm

#### Dump angle at maximum height

48.70 °

#### Dump reach at maximum height

475.20 mm

#### Dump height with standard bucket

1265.00 mm

#### Ground clearance

205.00 mm

#### Ground contact length

1052.00 mm

#### Height to bucket hinge pin

2056.80 mm

#### Height

1387.20 mm

#### Length with standard bucket

2698.40 mm

#### Operating height

2676.70 mm

#### Rollback at ground position

22.70 °

#### Rollback fully raised at maximum height

83.30 °

#### Length without attachment

1992.60 mm

#### Track

723.80 mm

**Turning radius with standard bucket**

1455.00 mm

**Width over tracks**

903.80 mm

**Width over standard bucket, 36-inch**

914.40 mm

**▲ Controls****MT100 Mini-Track Loader****Vehicle steering**

Direction and speed controlled by one hand lever

**Loader hydraulics tilt and lift**

Hand lever

**▲ Drive System****MT100 Mini-Track Loader****Transmission**

Infinitely variable tandem hydrostatic piston pumps, driving two fully reversing hydrostatic motors

**▲ Standard Features****MT100 Mini-Track Loader****Auxiliary hydraulics**

yes

**Bob-Tach™**

yes

**Built-in tie down and crane/lift locations**

yes

**Hydraulic drive train**

yes

**Instrumentation**

yes

**Lift arm lockout with manual bypass**

yes

**Lift arm support**

yes

**Neutral start interlocks**

yes

**Parking brake**

yes

**Reverse travel stop panel**

yes

**Spark arrestor muffler**

yes

**Tilt lockout**

yes

**Tracks — rubber — 180 mm**

yes

**CE certification**

yes

**Warranty: 24 months or 2000 hours, whichever occurs first**

yes

**▲ Options****MT100 Mini-Track Loader****Attachment control kit**

yes

**Catalytic exhaust purifier**

yes

**Engine block heater**

yes

**Light kit**

yes

**Ride-on platform**

yes

**Shutdown kit**

yes

**Environmental**

**MT100 Mini-Track Loader**

**Noise level LpA(EU Directive 2000/14/EC)**

88.00 dB(A)

**Noise level LWA(EU Directive 2000/14/EC)**

103.00 dB(A)

**Hand-arm vibration (ISO 5349-1)**

6.15 ms<sup>2</sup>

## MT100 Features

[Expand all](#)

Performance <sup>6</sup>

Comfort <sup>4</sup>

Serviceability <sup>1</sup>

Attachment <sup>2</sup>

## Popular Attachments



### Angle Broom

Dirt, dried mud, light snow and other debris are quickly and efficiently swept away with this hydraulically driven attachment.

### Boring Unit

Save the time and expense of tearing up sidewalks, driveways and other paved areas to install irrigation lines or power and communication cables.

### Breaker

Bobcat breakers offer high performance



[View All](#)

## Similar Machines



## Related Content



### Bobcat track loader with sand cleaner attachment on most famous Sicilian Beach

20 December 2022

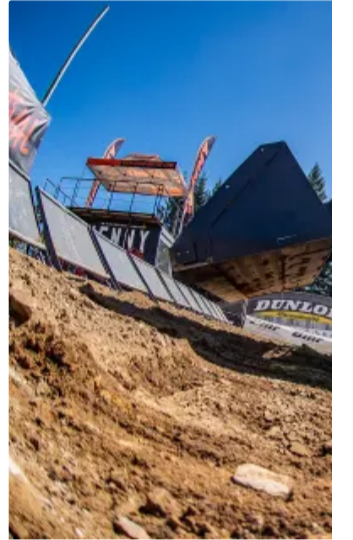
The Bobcat SC200 sand cleaner, mounted on the new Bobcat T76 R-Series tracked loader, was an incomparable combination for cleaning one of the most beautiful and widest coasts in Italy.



### Bobcat Machines at Archaeological Excavations

7 December 2022

Rome is a unique city in the world: it has buried under it an immense archaeological museum, the result of over 2800 years of history.



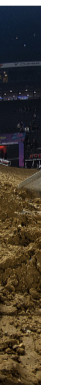
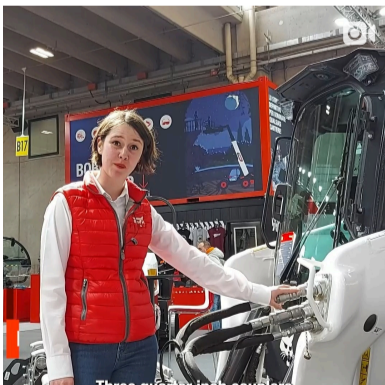
### Bobcat Loaders Build Ramp

30 November 2022

The 27th Kenny Festival, Europe's largest festival of horse-drawn wheels, took place on the weekend of the 27th and 28th of November in the South of France.



[View All >](#)



#### REGION SELECTOR

[CIS \(ENGLISH\)](#)

[BUYING TOOLS](#)

[REQUEST A QUOTE](#)

[FIND A DEALER](#)

[REQUEST A DEMO](#)

[REQUEST A BROCHURE](#)

[LEGAL](#)

[ABOUT US](#)

[LOCATIONS](#)

[NEWS AND MEDIA](#)

[BOBCAT VIDEOS](#)

[JOB STORIES](#)

[SPECIAL PRODUCT FEATURES](#)

[CONTACT US](#)

[PRIVACY POLICY](#)

[COOKIE POLICY](#)

[APPLICANT POLICY](#)

[TERMS OF USE](#)

[DEALER OPPORTUNITIES](#)

[FAQ](#)

[WEBSITE FEEDBACK](#)



***One Tough Animal.***

**DOOSAN**

**Bobcat is a Doosan Company.** Doosan is a global leader in construction equipment, power and water solutions, engines, and engineering, proudly serving customers and communities for more than a century. Bobcat®, the Bobcat logo and the colors of the Bobcat machine are registered trademarks of Bobcat Company in the United States and various other countries. ©2024 Bobcat Company. All rights reserved.