

Electric Eel®

(800) 936-9168
Made in the USA Since 1939

501 West Leffel Lane
Springfield, Ohio, 45506
USA
www.electriceel.com

EELvision Elite

**200 Foot Self-Leveling
Inspection Camera**



MADE IN THE USA

Electric Eel - WWW.ELECTRICEEL.COM

(800) 936-9168

EELvision Elite

200 Foot Self-Leveling
Inspection Camera

Disclaimer of Liability

ELECTRIC EEL MANUFACTURING CO. SHALL NOT BE LIABLE TO ANY PERSON OR ENTITY FOR ANY INJURY OR DAMAGE OR FOR ANY CONSEQUENTIAL, INDIRECT, INCIDENTAL, SPECIAL, EXEMPLARY, PUNITIVE OR ENHANCED DAMAGES, OR FOR ANY LOST PROFITS OR REVENUES, ARISING OUT OF ANY PURCHASE OR USE OF ANY PRODUCT, REGARDLESS OF THE LEGAL THEORY (CONTRACT, TORT, OR OTHERWISE) UPON WHICH THE CLAIM IS BASED. THE FOREGOING LIMITATION OF LIABILITY SHALL APPLY EVEN IF ANY REMEDY FAILS OF ITS ESSENTIAL PURPOSE.

General Safety Guidelines

WARNING: Read all safety warnings and guidelines.

Failure to follow the warnings and instructions may result in electrical shock, fire, and/or serious injury.

Work Area Safety Guide

Keep your work area clean and dry as possible.

Do not operate equipment in explosive or flammable environment.

Keep children away when operating the system.

Electrical Safety Guide

Do not expose equipment to rain or wet environment.

Keep hands dry and all electrical connections dry.

Do not abuse the power cord.

Personal Safety Guide

Be alert and aware of your environment.

Be prepared and follow instructions.

Use protective equipment when using the equipment.

Use Equipment with Care

Do not force the equipment.

Do not allow an inexperienced operator to use the equipment.

Maintain equipment and use only accessories that are recommended by the manufacturer.

Use Battery with Care

Use equipment only with specific external battery pack.

Recharge with the charger specified by the manufacturer.



EELvision Elite

200 Foot Self-Leveling
Inspection Camera

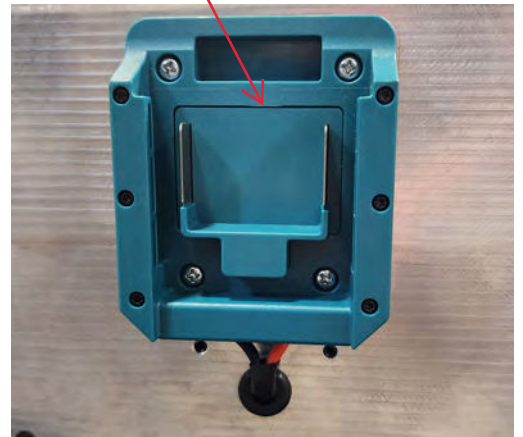
Feature Identification

Protective Sunshade/Screen Protector



USB Port

18V Makita Battery Cradle



Power On

Brightness Up

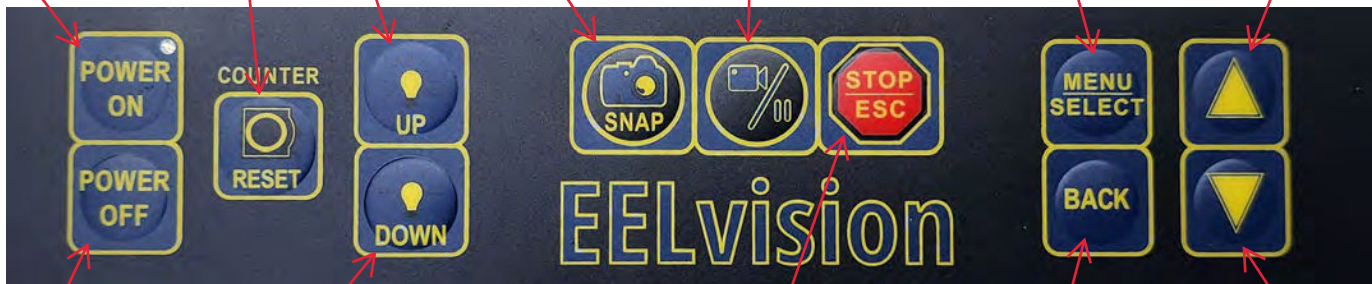
Start/Pause Recording

Counter Reset

Take Picture

Menu/Select

Arrow Up



Power Off

Brightness Down

Stop Recording/Escape

Back

Arrow Down

If the 18V Makita battery cradle is damaged, notify your vendor and use the supplied AC adapter, until the cradle is repaired or replaced.



EELvision Elite

200 Foot Self-Leveling
Inspection Camera

Main Help Screen

Main Help Screen

POWER ON Turn Camera Power ON	COUNTER RESET Set cable length to zero	MENU Open Menu or Select current entry
POWER OFF Turn Camera Power OFF	SNAP Save the current screen image	BACK Close a Menu or Stop current task
UP Make Camera Light brighter	RECORD/PAUSE Start, Pause, or Resume recording	UP Move Up or Down in a Menu or file list OR Move forward or backward in a video
DOWN Make Camera Light dimmer	STOP Stop recording or playing a video	DOWN Move forward or backward in a video

Press the BACK button to exit this screen

01-17-2024 12:59PM EST 0.0 ft 235.5 v1.01

Insert USB stick/Startup Screen

Insert USB stick.
Press RECORD or SNAPSHOT button.
Press MENU to view snapshots or video.

01-17-2024 01:01PM EST 14.8 ft 250.4



EELvision Elite

200 Foot Self-Leveling
Inspection Camera

Recording Video Screen



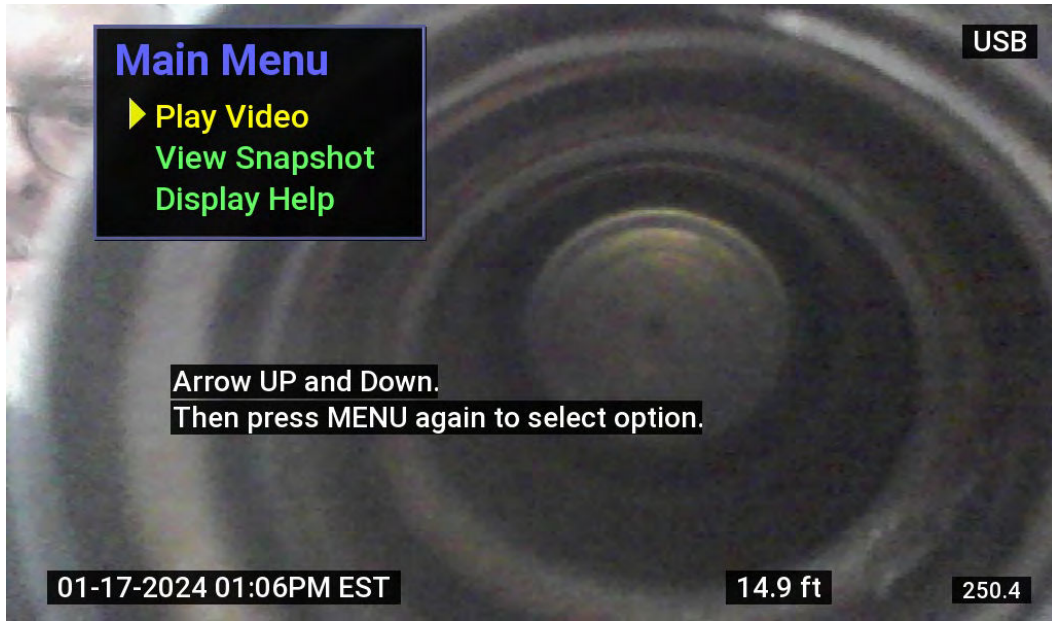
Snapshot Confirmation Screen



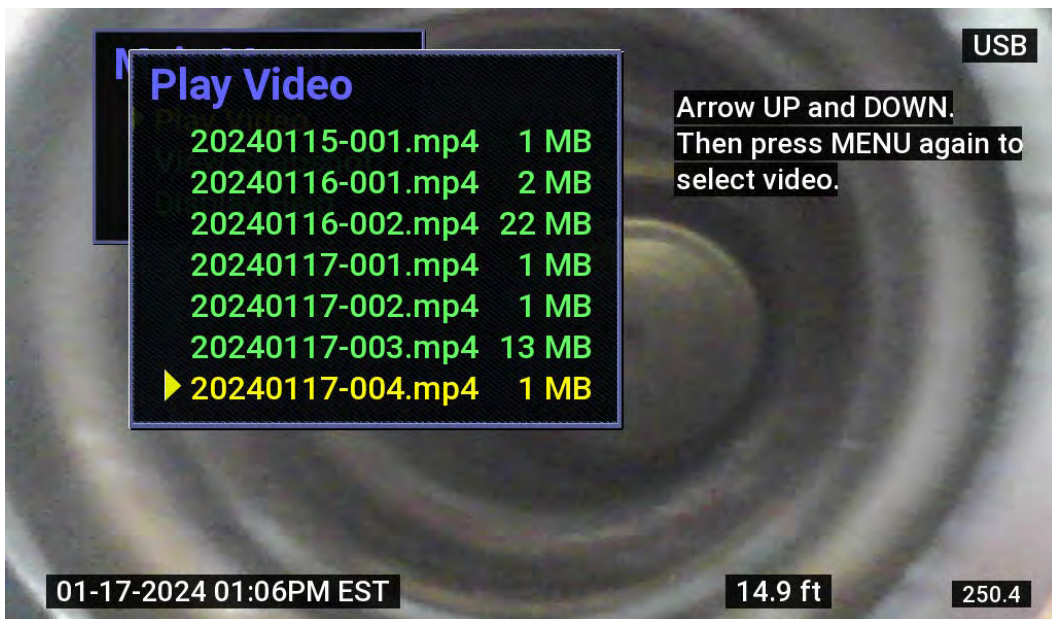
EELvision Elite

200 Foot Self-Leveling
Inspection Camera

View Snapshot/Play Video Screen



Video Select Screen



EELvision Elite

200 Foot Self-Leveling
Inspection Camera

View Snapshot/Play Video Screen



Snapshot Select Screen



EELvision Elite

200 Foot Self-Leveling
Inspection Camera

Battery Cradle Configurations



Makita with no adapter



Dewalt with adapter



Milwaukee with adapter

Battery Adapter



Cradle Side



Battery Side

Remove the battery and battery adapter from the unit while in transport.

EELvision Elite

200 Foot Self-Leveling
Inspection Camera

Inspection Procedure - Minimum Diameter Pipe 3"

Skids should always be used to protect the camera head and make sure the camera is centered or off the pipe floor. Care should be taken so the skids do not snag in the line. Under normal operating situations, the camera is used with a smaller protective sleeve in lines under 4" in diameter.

The EELvision Elite inspection camera includes these standard features:

- **Self-Leveling Color Camera** - the picture on the screen can always be viewed right side up.
 - **Footage Counter** - the on screen footage counter allows the operator to know exactly how many feet the camera has been inserted into a line. The counter can be reset at any time by pushing the "counter reset" button on the monitor.
 - **Makita 18V battery port** affixed to back of the monitor housing allows for use when AC power is not available.
 - **A dual battery adapter** is also provided with the View which allows for the use of a Milwaukee or Dewalt 18V battery.
 - **A continuous display odometer** located on bottom right of the monitor screen tracks footage usage on a job.
 - One touch recording to USB.
- ✓ Slowly push the camera into the pipe and negotiate the camera into position to feed down the pipe making sure the flex spring does not kink or double back on itself.
 - ✓ Push the camera slowly and carefully during the inspection, taking note of the pipe condition for possible hazards that may entangle or damage the camera on entry or retrieval.
 - ✓ When negotiating a corner, care should be taken not to butt the nose of the camera against the sidewall with any force. It would be better to let the camera "work" its way around the corner. If resistance is encountered when turning the corner and there is no visible signs of blockage, turning the push rod or gently pulling the camera back and forth helps.
 - ✓ Should resistance become extreme, or the camera gets entangled or stuck, slowly push it back and forth to free it. Sometimes turning the push rod may also help.
 - ✓ Upon completion of the inspection and retrieval of the camera, it may be necessary to manipulate the camera around the initial bend in the pipe with a pole or other device if required.



EELvision Elite

200 Foot Self-Leveling
Inspection Camera

- ✓ Never use the camera to unclog a drain or clear debris in the pipe. Doing so can cause damage to the camera head or lens.
- ✓ Never force the camera down a pipe as this may cause a kinked pushrod which will require costly repairs.
- ✓ Never use a pressure washer to clean any part of the system. High pressure water can cause degradation of the electronic parts causing damage.
- ✓ Never un-spool all the push rod from the reel. Always leave a few turns of the rod on the reel to aid with re-spooling.

Care Guide

Camera Head – After every use, the camera should be cleaned and checked for possible damage. External scuffing of the camera case is normal and should be of no concern. The camera view port is made of sapphire glass and should be cleaned with a soft, damp cloth. Grease, dirt or scratches will affect the quality of the video and if the lens is badly scratched it should be replaced.

Camera Lights – The camera head uses LED lights and cannot be replaced by the operator. These lights use very little power and unless physically damaged or extreme voltage is applied to them, should last years. If replacements are needed, the camera head should be returned to the factory for service.

Reel and Cable Assembly – The reel and cable assembly should be kept clean from dirt, slime, grit, etc. When winding the cable back onto the reel, it is good practice to use a damp cloth to wipe off any debris.

Never use a power washer to clean any of the equipment. Pressurized water may get into unsealed areas causing damage. Water damage to electronic equipment is not covered by the manufacturer's warranty.



EELvision Elite

200 Foot Self-Leveling
Inspection Camera

Product Specifications

Controller Specs	
LCD Screen Size	7"
LCD Screen Resolution	1024 x 600
Power Source	12V 5 Amp DC, AC, Optional Battery
Video Format	NTSC
Video Recording	MPEG4
Image Capture	JPG
Language Support:	English
Battery	Makita, Milwaukee® M18 18V, Dewalt or equivalent
Battery Adapters	Included for Dewalt & Milwaukee® M18 18V or equivalent

Camera Head Specs	
Dimensions	2.4" L x 1.3" W
Camera Resolution	640 x 480
Self-Leveling	Yes
Weight	0.41 Pounds
Construction	Stainless Steel
Image Sensor	¼" CMOS
Sensitivity	0.025 Lux
Field of View	75 degrees
Camera Body	Stainless Steel
Camera Lens	Sapphire Glass
Light Ring	12 Super Bright LED's
LED Window	Polycarbonate
Pipe Compatibility	3" – 14"
Sonde Frequency	512 Hz

EELvision Elite

200 Foot Self-Leveling
Inspection Camera

Product Specifications

Reel Specs	
Construction	Welded Steel
Cable Length	200'
Cable Exterior	Polypropylene Jacket
Cable Core	0.177" Fiberglass Rod
Push Rod Diameter	0.475" OD
Dimensions	21.5" L x 15.3" W x 35.7" H
Weight	62 lbs
Protective Skids	2"
Finish	Powder Coat
Distance Counter Units	Feet
Controls	Reel Brake

